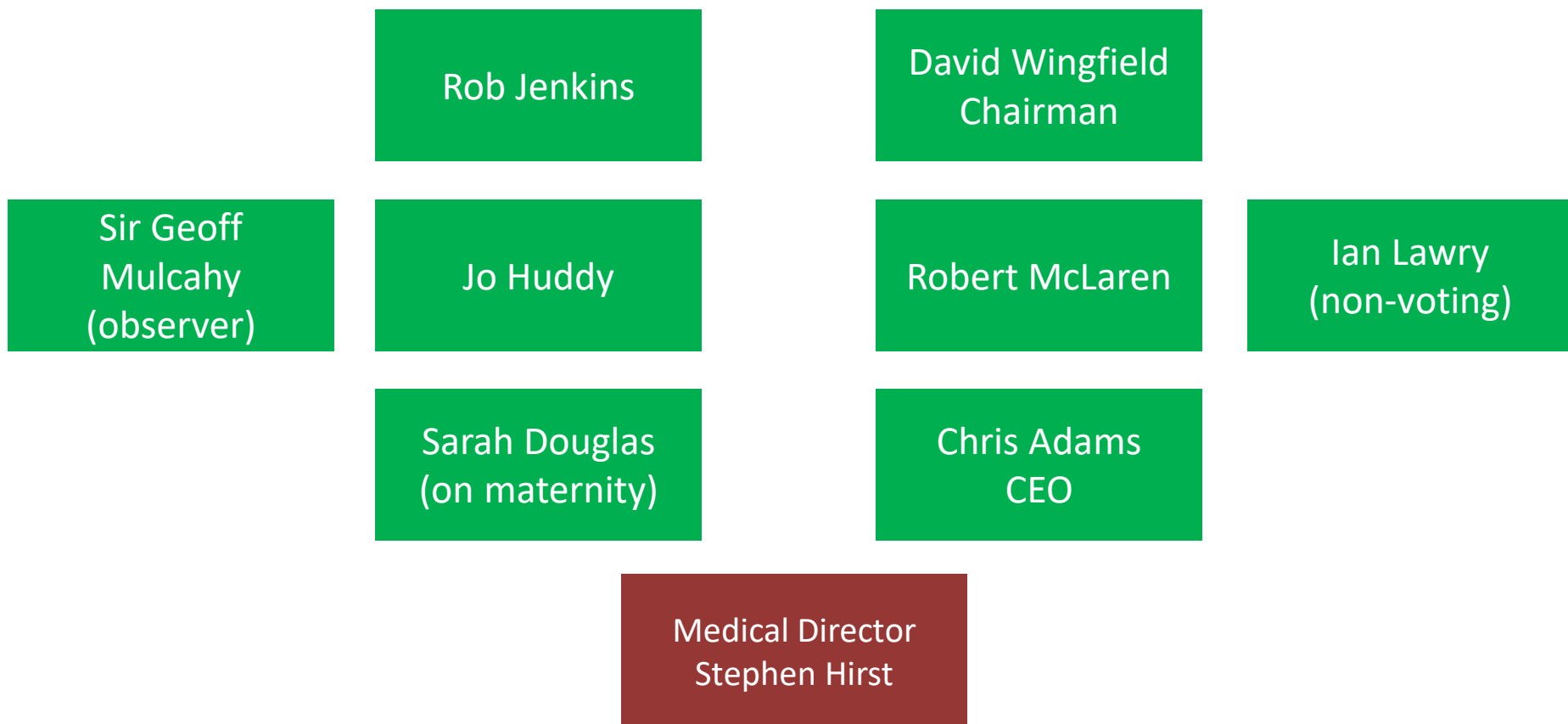


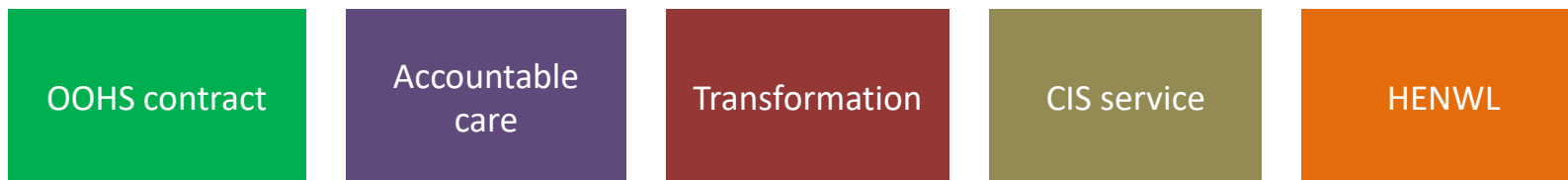


H&F Health & Wellbeing Board March 2017

ORGANISATION STRUCTURE 1 OF 3 – BOARD OF DIRECTORS



Funding Source



ORGANISATION STRUCTURE 2 OF 3 – CLINICAL

Clinical Governance

Cardiovascular Lead
Jas Khaler

Diabetes Lead
Dr Paula Fernandes

Mental Health Lead
Dr Niraj Arora

Nursing Lead
Vicki Newport

Medical Director
Stephen Hirst

Clinical Delivery (employed)

Hannah Peters
CIS GP P/T
(maternity leave)

Lizzie Greenberg
CIS GP P/T

Vaidehi Hegde
Urgent Care Fellow (GP)

Chad Hockey
Urgent Care Fellow (GP)

Donna Lacey
Urgent Care Fellow (PA)

Anna Phelon
Urgent Care Fellow (GP)

Clinical Delivery (bursary)

Amar Maroo
Paeds PIE (GP)

Huda Al-Hadithy
Paeds PIE (GP)

Jane Busby
Paeds PIE (GP)

Jayna Kumpavat
Paeds PIE (GP)

Noorez Hirani
Paeds PIE (GP)

Pat Barbour
Paeds PIE (GP)

Radegund Norbery
Paeds PIE (GP)

Funding Source

OOHS contract

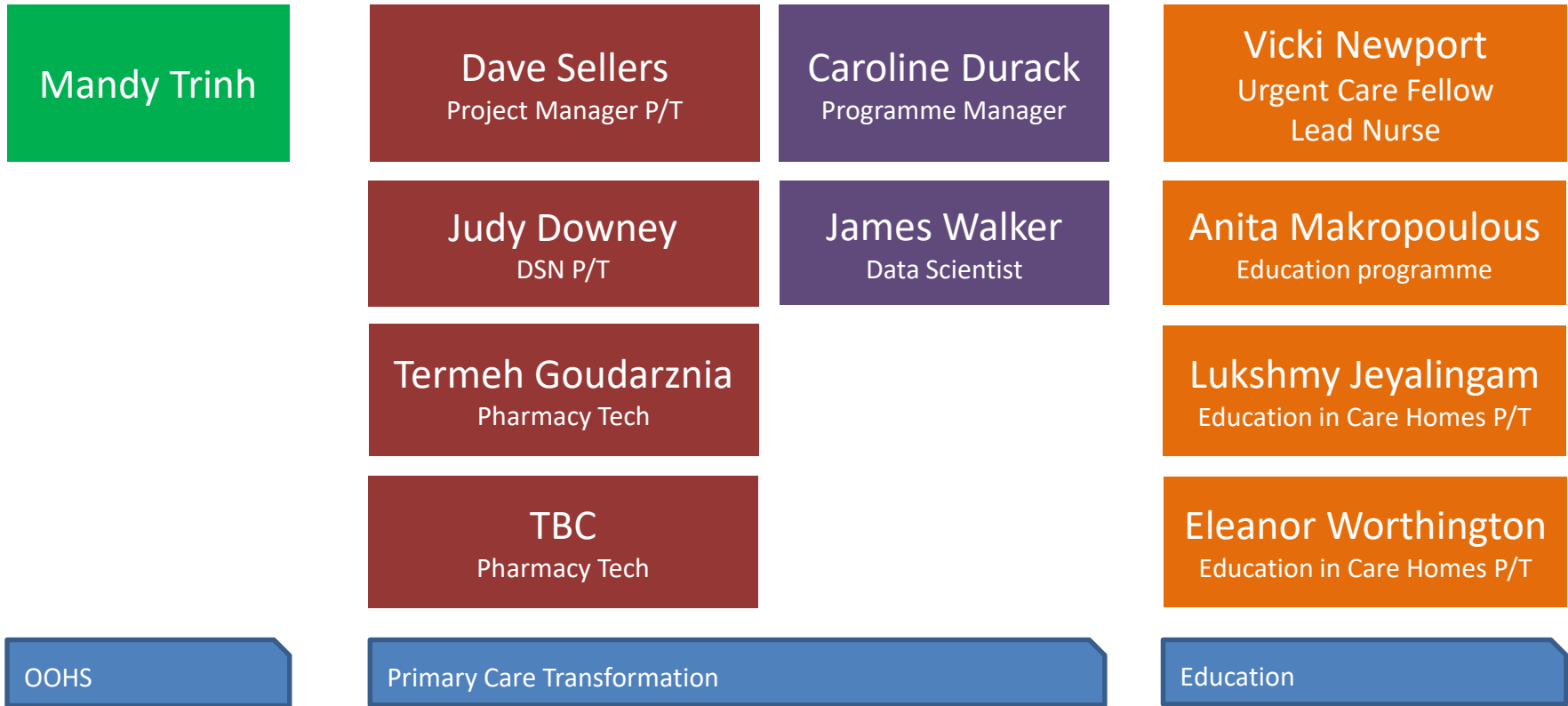
Accountable care

Transformation

CIS service

HENWL

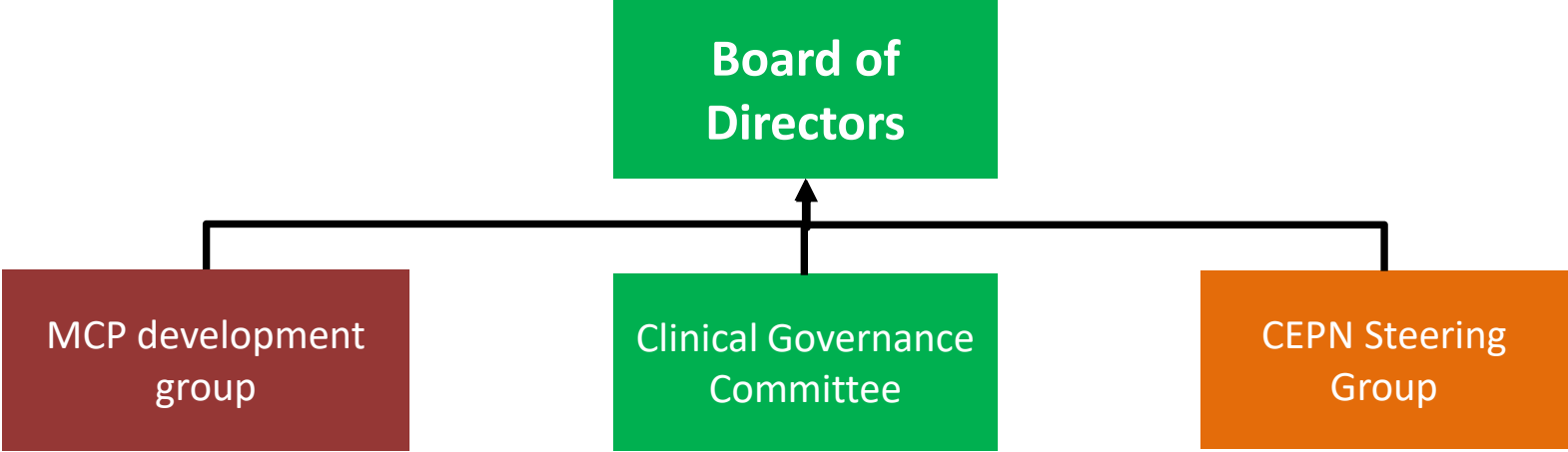
ORGANISATION STRUCTURE 3 OF 3 – OPERATIONS



Funding Source



GOVERNANCE STRUCTURE 1 OF 1



Currently being established
Will meet quarterly
Will be chaired by Board director
GP representative from each network
CLCH and WLMHT representatives
Patient representative

Meets quarterly
Chaired by Medical Director
All GP directors
Lead Nurse
Patient representative

Meets two monthly
Chaired by a Board director
Multiple stakeholder representatives
Staff group representatives
Patient representative



Funding Source

OOHS contract

Accountable care

Transformation

HENWL

SOURCES AND USES OF FUNDING 1 OF 1



SOURCES

48% funded by CCG grants
29% trading income
23% funded by HENWL grants

71% GRANT FUNDED

100% funded by HENWL grants

100% GRANT FUNDED

USES

Board and CEO
Office usage
Medical director and clinical leads
All transformation work
All accountable care / MCP work

Lead nurse and administrator
Office usage
Clinical training
Education hubs
Education development projects

RECENT ACHIEVEMENTS 1 OF 1

Shortlisted for HSJ Awards 2016: “Primary Care Innovation”

Schwarz Rounds: First in UK in primary care, and first in care homes

Expanded accountable care MoU to Imperial, ChelWest, and WLMHT

Joined NAPC “Primary Care at Home” national programme

Started discussions with CLCH and WLMHT in relation to MCP development

PROGRAMME STREAMS CONTENT 1 OF 9

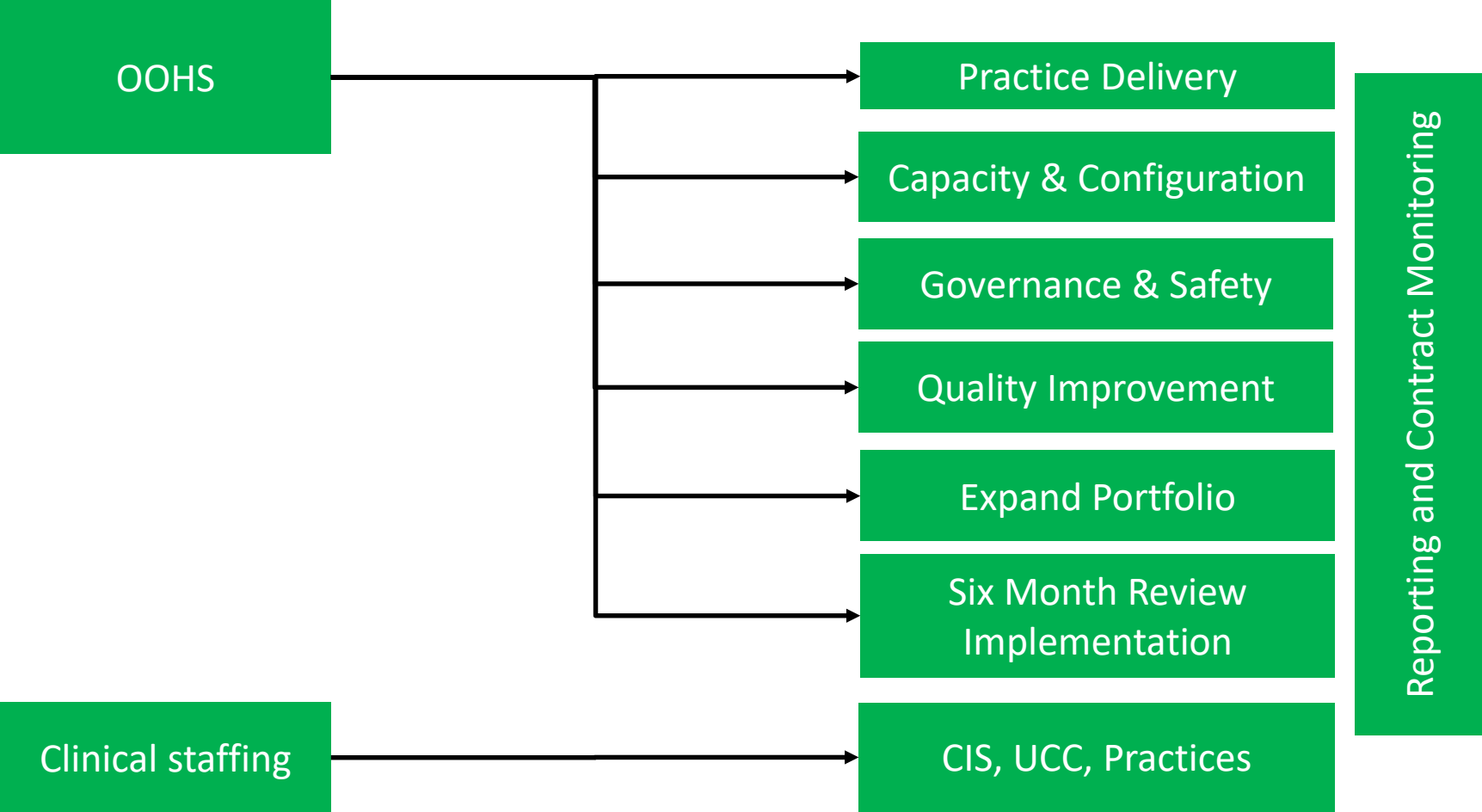
OOHS contract

Accountable
care

Transformation

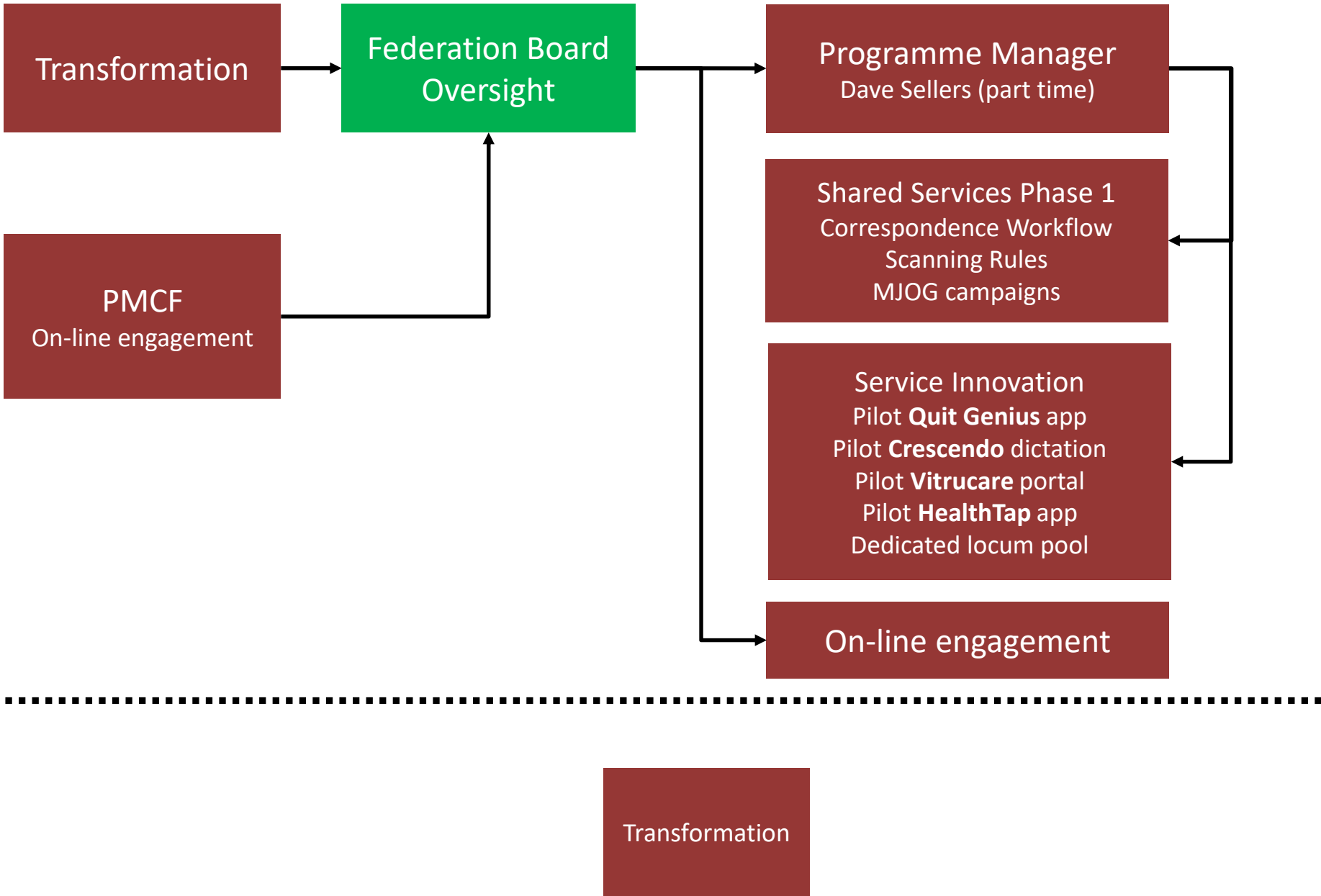
HENWL

PROGRAMME STREAMS CONTENT 2 OF 9

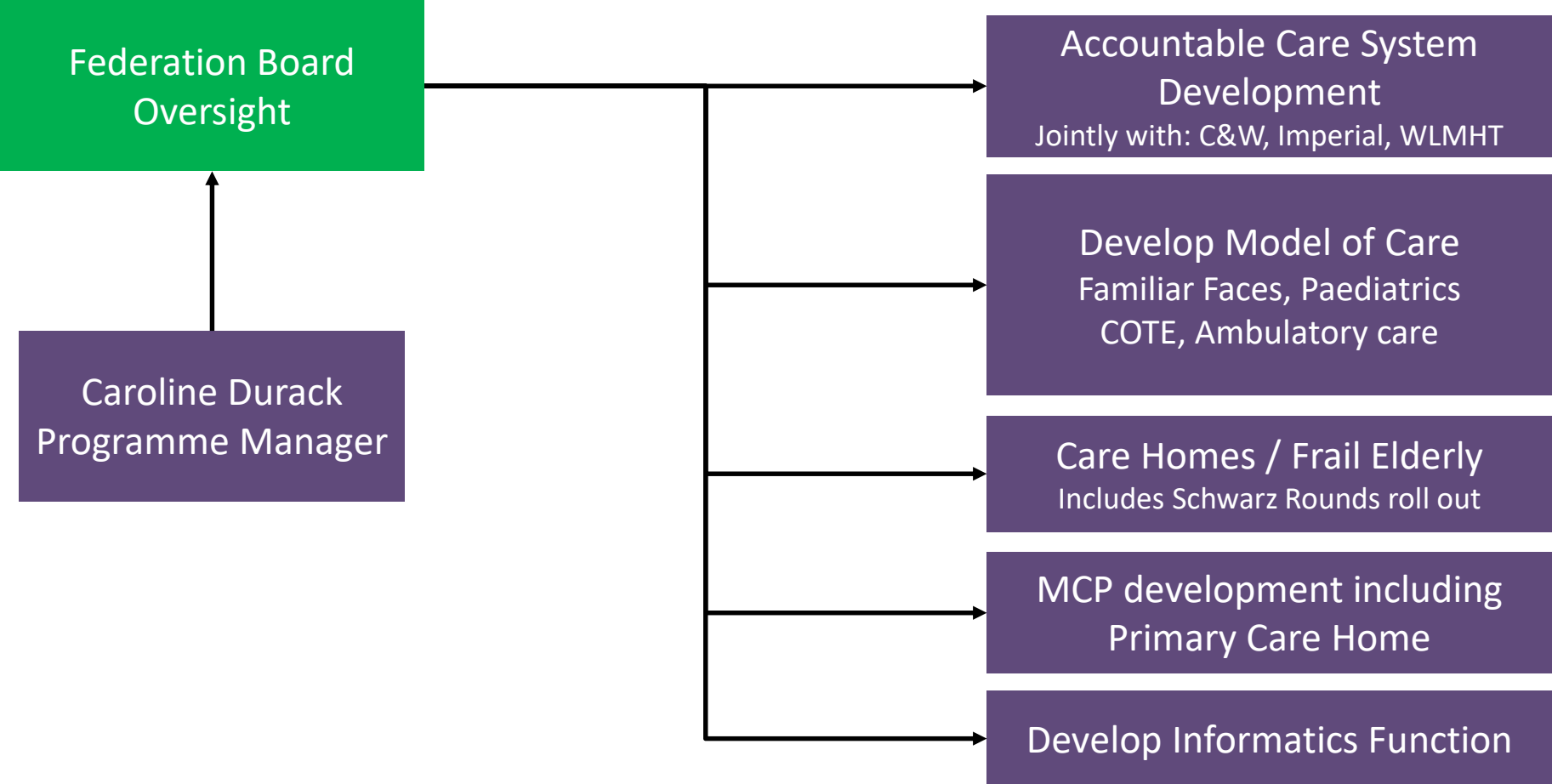


OOHS contract

PROGRAMME STREAMS CONTENT 4 OF 9

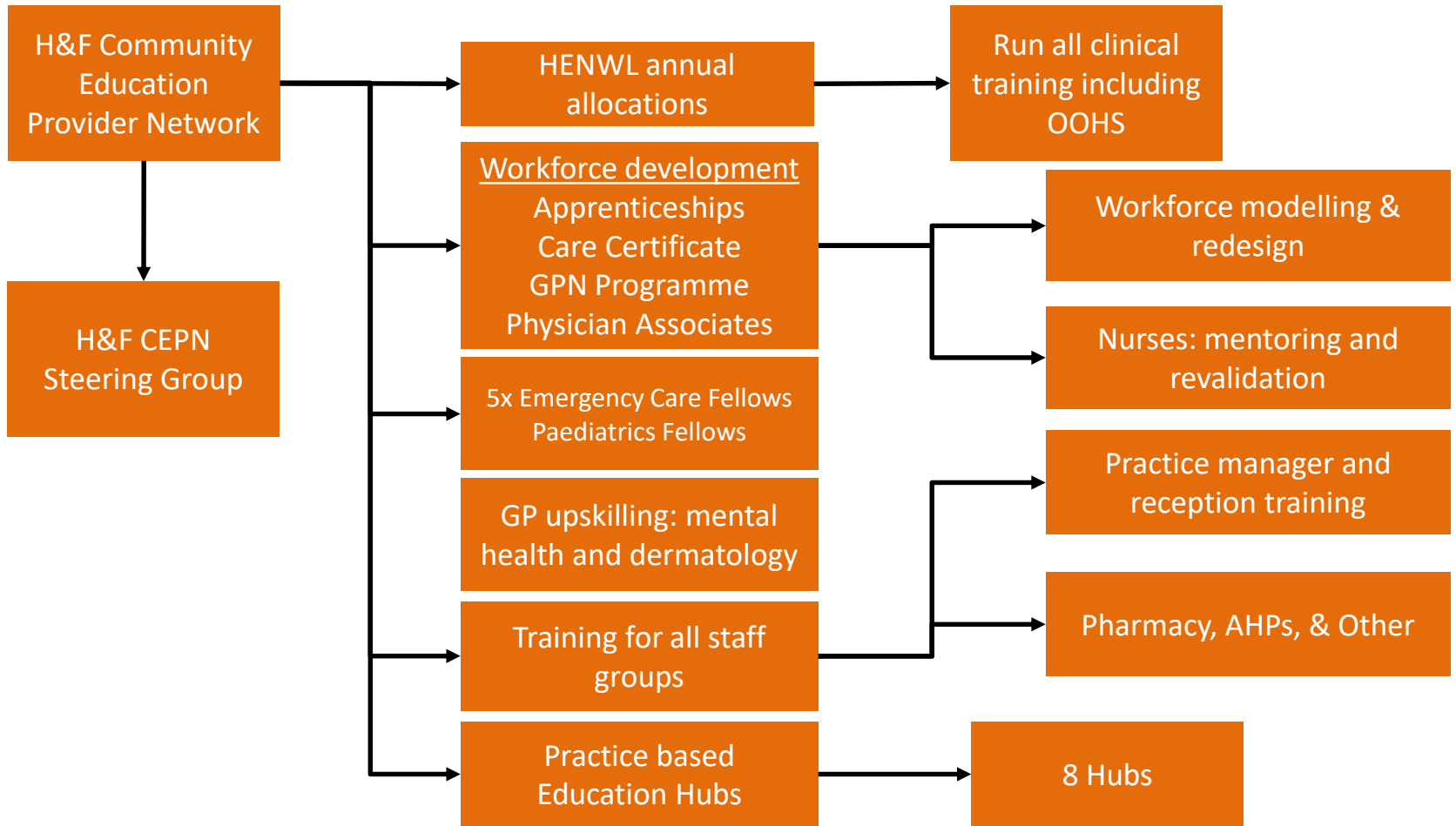


PROGRAMME STREAMS CONTENT 6 OF 9



Accountable care

PROGRAMME STREAMS CONTENT 8 OF 9



HENWL